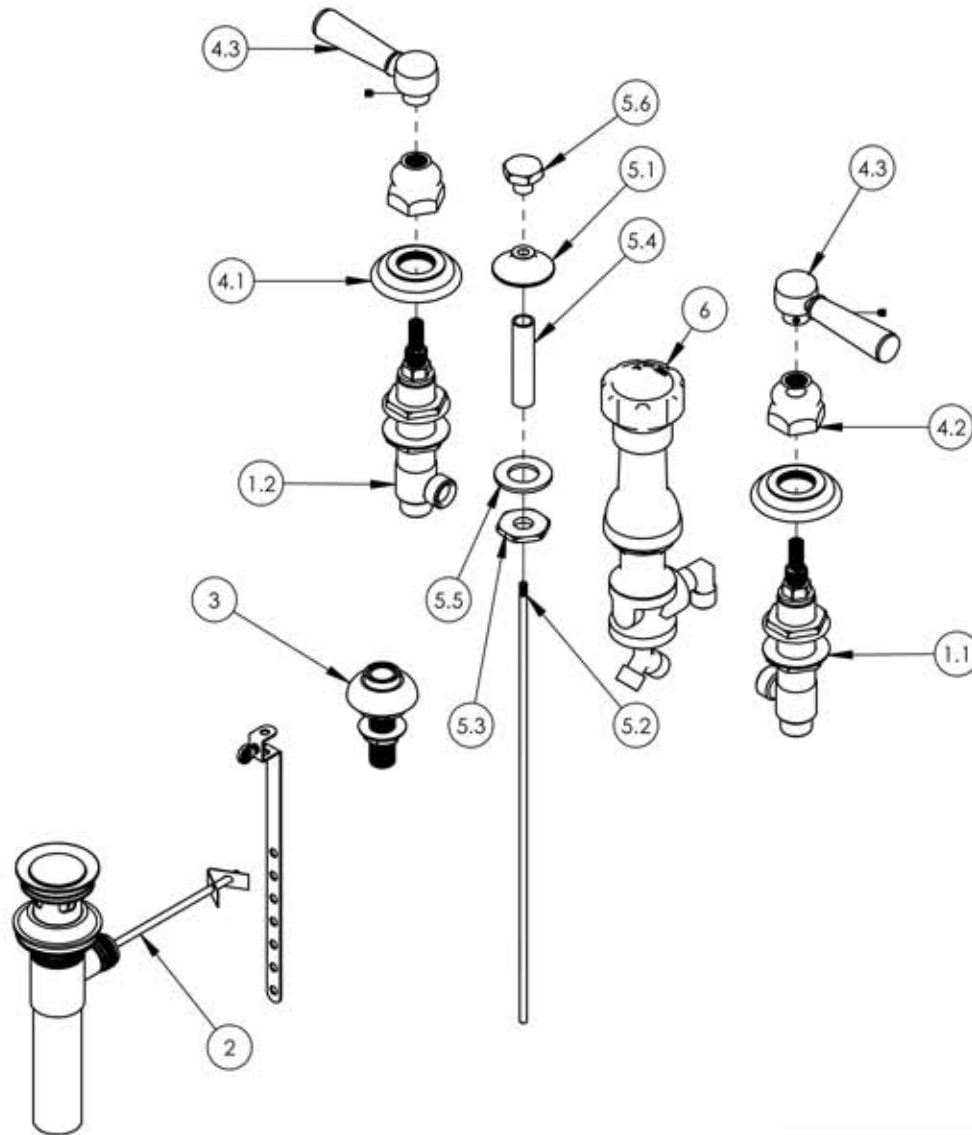


A

B

C

D



ITEM NO.	PART NUMBER	DESCRIPTION	QTY.
1	1-600	WIDESPREAD HOT AND COLD VALVES W/PLASTIC NUTS	1
1.1	1-109	WIDESPREAD VALVE COLD LAV 16PT	1
1.2	1-110	WIDESPREAD VALVE HOT LAV 16PT	1
2	3-046/00	POP-UP DRAIN ASSEMBLY (2-101, 2-102)	1
3	3-085/00	ASSY, BIDET SPRAYER	1
4	3-140/00	LEVER HANDLE, HEX TRADITIONAL 500 SERIES.	2
4.1	10619/00	ESCUTCHEON, TRADITIONAL LAV 1"-20	1
4.2	10621/00	BASE HUB NUT	1
4.3	2-141	SUB ASSY. LEVER HANDLE, 500 SERIES	1
5	3-145/00	ASSY. BIDET POP-UP ROD, 500/501 SERIES	1
5.1	P09007/00	K4160 POP UP GUIDE	1
5.2	10719/00	POP-UP ROD, 10-24, 14" LONG	1
5.3	P09006	SPECIAL HEX F/BIDET SPRAYER	1
5.4	P32010	9/16-20 x .56 NIPPLE FOR COMPRESSION STEM	1
5.5	P35026	3/4" SAE FLAT WASHER	1
5.6	10920/00	POP-UP KNOB, HEX TRADITIONAL	1
6	3-160	BIDET DIVERTER, COMPLETE	1

E

ZONE	REV.	DESCRIPTION	DATE	APPROVED
------	------	-------------	------	----------

REVISIONS

1261 LOGAN AVENUE
COSTA MESA, CALIFORNIA 92626
PHONE: 714.361.4800
FAX: 714.617.3120

PHYLORICH®

Defining Luxury Since 1959

PROPRIETARY AND CONFIDENTIAL

THE INFORMATION CONTAINED IN THIS DRAWING IS THE SOLE PROPERTY OF RISS MANUFACTURING. ANY REPRODUCTION IN PART OR AS A WHOLE WITHOUT THE WRITTEN PERMISSION OF RISS MANUFACTURING IS PROHIBITED.

-	-	INTERPRET GEOMETRIC DIMENSIONING & TOLERANCING IN ACCORDANCE WITH ASME Y14.5-2009 & ASME Y14.41-2003 STANDARDS. UNLESS OTHERWISE SPECIFIED, DIMENSIONS ARE IN INCHES. TOLERANCES ARE:		FOUR HOLE BIDET SET, LEVER HDLS, HEX TRAD	
-	-	FRACTIONS ±1/64"	DECIMALS X.X: ±.1 X.XX: ±.01 X.XXX: ±.005		
NEXT ASSY	USED ON	APPLICATION		SIZE A	ASM/PRT NO. 500-61/00
MATERIAL		NAME	DATE	REV -	
FINISH		DRAWN	LLO 9/15/2015	SCALE: 1:5	WEIGHT: lbs.
DO NOT SCALE DRAWING		CHECKED	GRE	SHEET 1 OF 1	

5

4

3

2

1